



Banbury Road ,
Stratford-Upon-Avon, CV37 7HG

Jeremy
McGinn & Co

Asking Price £120,000



A chance to acquire a two bedroom first floor retirement apartment, offered for sale with No Onward Chain. Swan Court was constructed by McCarthy & Stone for the over 55's and comprises 46 properties arranged over 3 floors each served by lift. The Development Manager can be contacted from various points within each property in the case of an emergency. For periods when the Development Manager is off duty there is a 24 hour emergency Appello call system. There is also a Guest Suite that visitors can stay in & communal areas and gardens. The property briefly comprises; entrance hall, generous Living Room, Fitted Kitchen, Two Double Bedrooms (one currently utilised as a separate Dining Room) and Shower Room. We have been informed that the property is Leasehold with a Lease of 125 years from 1997 and has a Service Charge of £4748.18 and Ground Rent of £586.19 but this should be confirmed by a purchasers solicitor.





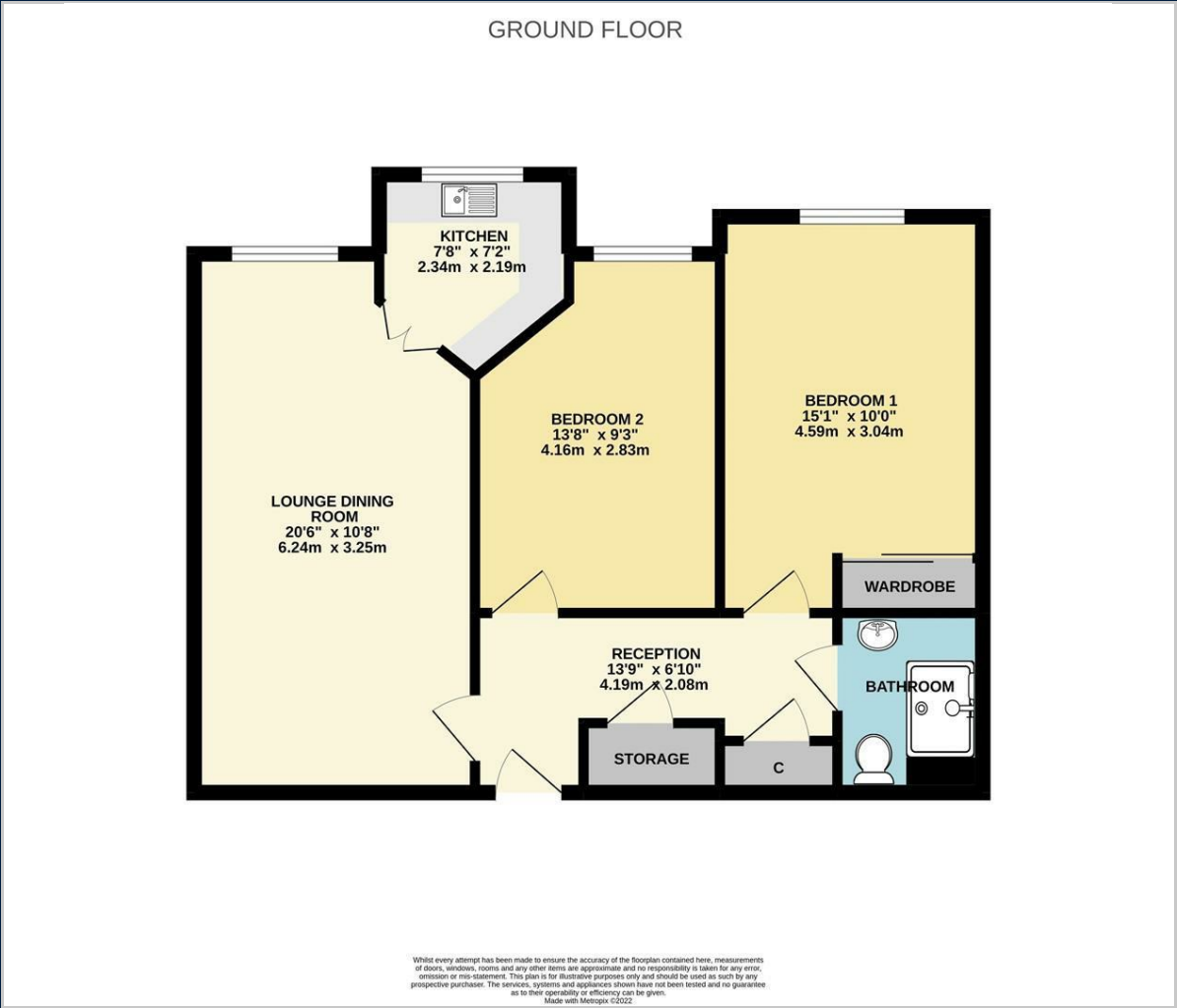
Tax Band: E

Council: Stratford on Avon
District Council

Tenure: Leasehold



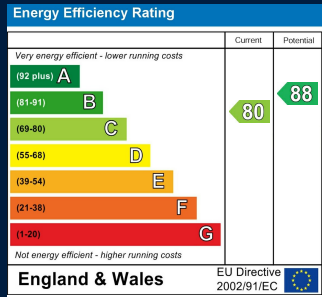
Floor Plan



Map



Energy Performance



These particulars, whilst believed to be accurate are set out as a general outline only for guidance and do not constitute any part of an offer or contract. Intending purchasers should not rely on them as statements of representation of fact, but must satisfy themselves by inspection or otherwise as to their accuracy. No person in this firms employment has the authority to make or give any representation or warranty in respect of the property.

55 Ely Street, Stratford Upon Avon, Warwickshire, CV37 6LN
Tel: 01789 868168 Email: stratford@jeremymcginns.com www.jeremymcginns.com